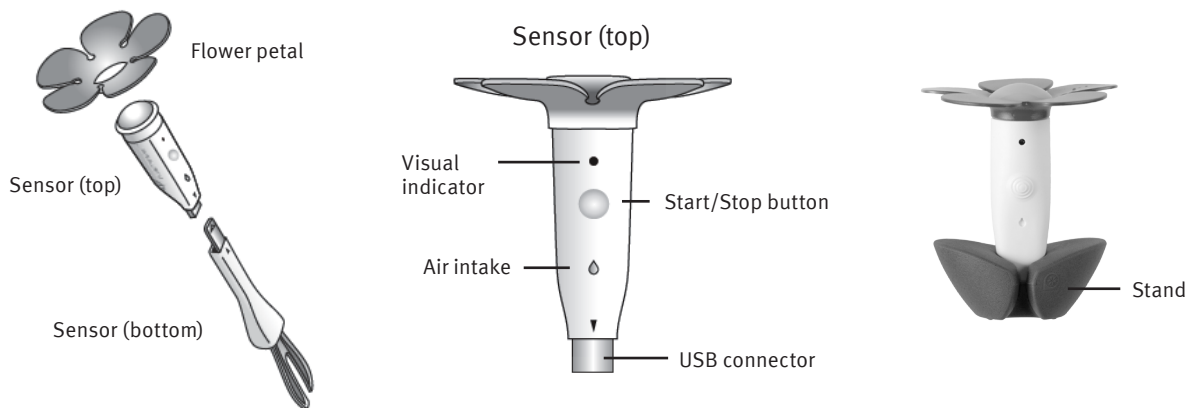


Getting to know your EasyBloom Plant Sensor Plus



Visual and Audio Feedback

Mode/Status	Event	Visual	Audio
Connected to computer	Companion software not installed	Solid orange	Up tone
Inserting battery	Closing battery door	No light	Ba-beep
Connected to computer	Sensor attached to USB	Blink green	Up tone
Disconnecting from computer	Sensor detached from USB	No light	Down tone
Recommend mode	Press start/stop button	Blink green	Up tone
Recommend mode	Press start/stop button	Blink orange	Down tone
Recommend mode	Taking a reading	Blink green once every 5 seconds	No sound
Monitor mode	Press start/stop button	Blink green	Up tone
Monitor mode	Press start/stop button	Blink orange	Down tone
Monitor mode	Taking a reading	Blink green once every 5 seconds	No sound
Monitor mode	Needs watering	Blink orange	Warning
Water mode	Needs watering	Blink orange	Siren
Water mode	Doesn't need watering	Blink green	No sound

Quick Start Card

PLEASE DO NOT PLUG YOUR SENSOR INTO YOUR USB PORT UNTIL STEP 3 BELOW.

1 REGISTER


- Point your web browser to <http://easybloom.com/go> to register or sign in (Figure A).

2 DOWNLOAD COMPANION SOFTWARE

- On the download page, click **Download Now** below the Windows® or Mac® logo (Figure B).
- Follow the on-screen instructions.

3 INSERT BATTERY AND CONNECT TO USB

- Insert a new battery into your sensor with the negative (-) side pointing up (Figure C).
- Connect the sensor to your computer's USB port, using the provided USB cable (Figure D).
- When prompted, enter the e-mail address and password you used during registration.
- The EasyBloom website will now launch automatically.

NOTE: Next time you plug your sensor into your USB port, our companion software will automatically log you in and launch the EasyBloom website. This software runs in the background, by your computer's clock (look for the  icon).

4 SET YOUR SENSOR

On the Dashboard page select from the following three options (Figure E):

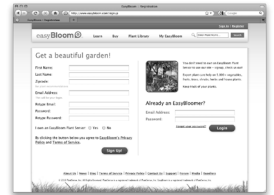
- Recommend*** – Discover which plants are right for your location (at least 24 hours).
- Monitor*** – Get expert diagnostic feedback on the sunlight, temperature, soil fertility and exact watering needs of your plant (up to 2 weeks).
- Water** – Figure out which of your plants need to be watered on the fly – without getting your fingers dirty.

NOTE: In Water mode your sensor will blink green continuously except when in contact with dry soil. When this occurs your sensor's light will switch from green to orange and emit a siren sound. In this mode data is not uploaded to your computer.

* To activate the fertilizer functionality of your EasyBloom Plus, you will need to purchase a fertilizer subscription. To subscribe go to **My Profile** on the EasyBloom website.

5 TAKE YOUR FIRST READING (RECOMMEND AND MONITOR ONLY)

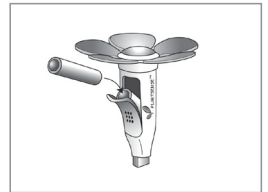
- For in-ground Recommend and Monitor readings, connect the sensor (bottom) and place the sensor in a spot where you would like to grow plants, or next to a plant that needs some help.
- Press the **START** button. You will hear an ascending tone and the light will blink green five times in rapid succession. The light will continue to blink green every five seconds while it is collecting data. In Monitor mode you should water the plant thoroughly at the start of your reading. You will hear a siren sound and see the LED switch to orange when your plant needs watering, and your reading is ready.



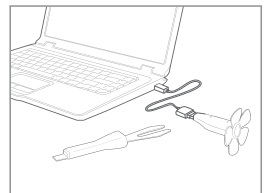
A



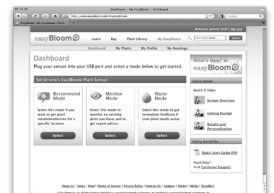
B



C



D



E